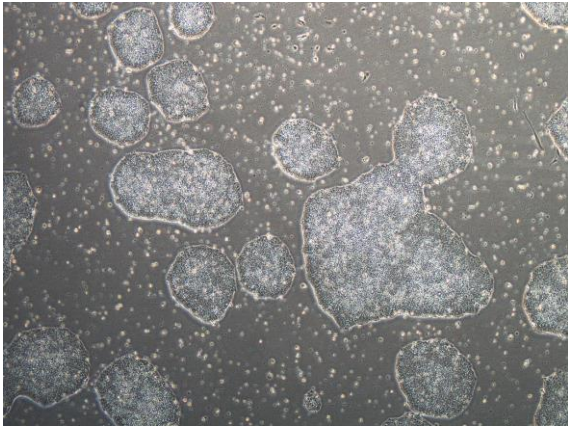
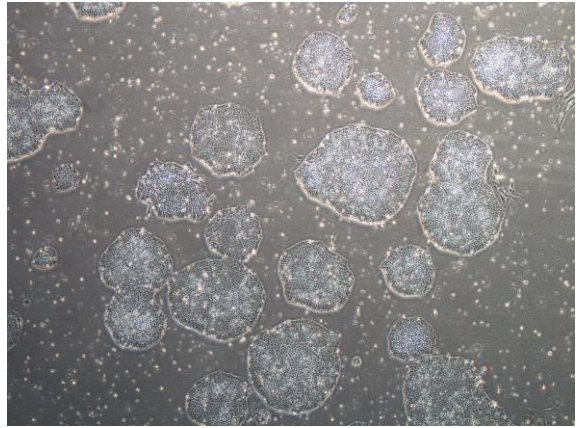


## 【 CiRA-j-1066 】 Morphology of iPSC colonies

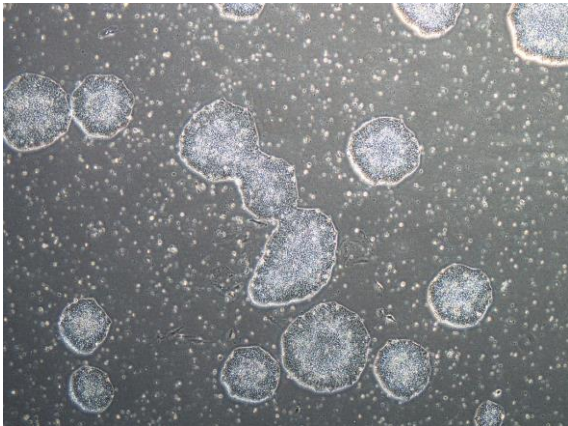
CiRA-j-1066-A: passage-3



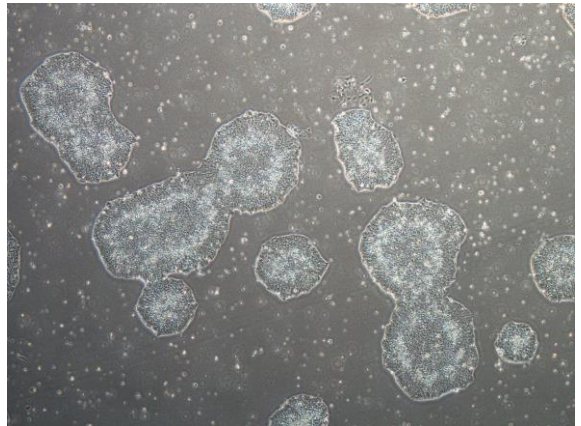
CiRA-j-1066-B: passage-3



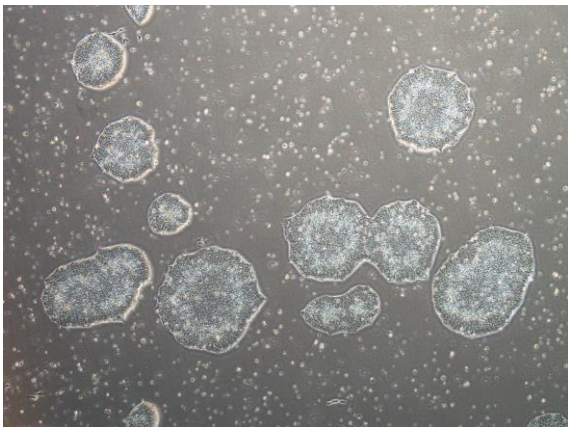
CiRA-j-1066-C: passage-3



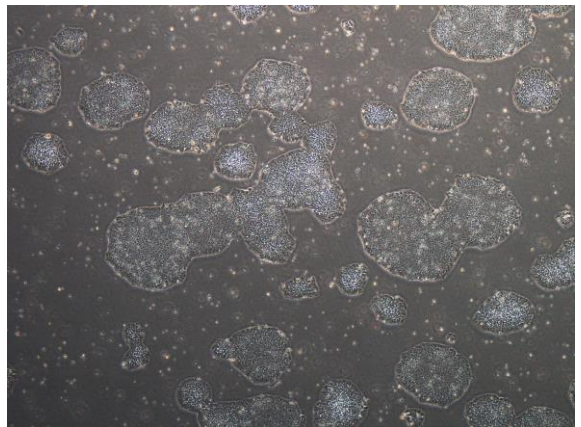
CiRA-j-1066-D: passage-3



CiRA-j-1066-E: passage-3



CiRA-j-1066-F: passage-3



( All images were captured at 4x magnification )